

Product Categories



LNBF



Circular LNBF

ITEM	SPECIFICATION
Input Frequency	11.7 ~ 12.75 GHz
Polarization	RHCP/LHCP
LO Frequency	10.75 GHz
Noise Figure	0.5 dB



DCSS LNBF/ SCR LNBF

ITEM	SPECIFICATION
SCR LNBF	Maxlinear Solution
Band stacked LNBF	Customize LO Frequency



DiSeq Switch 2x1/4x1

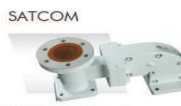
ITEM	SPECIFICATION
Input Frequency	950 ~ 2150 MHz
Insertion Loss	3 dB
Isolation	20 dB
Input Return Loss	8 dB
Output Return Loss	8 dB

VSAT Applications



Receive Band Rejection Filter & Sampler

ITEM	SPECIFICATION
Waveguide Size	WR75
Operating Frequency	13.75-14.50 GHz
VSWR	1.2 max
Insertion Loss	0.40 dB max
Rejection	25dB min @ 10.70-12.75GHz
Coupling	30±1dB



WR75 OMT Network

ITEM	SPECIFICATION
Frequency	Rx:10.7~12.75GHz / Tx:13.75~14.5GHz
VSWR	1.5 max
Insertion loss	Tx to Horn 0.2dB max Horn to Rx 0.4dB max
Isolation	Tx to Rx 40 dB min @ 10.7 ~ 12.75 GHz Rx to Tx 40 dB min @ 13.75 ~ 14.5 GHz X-pol 55 dB min @ 10.7 ~ 14.5 GHz



Ku Band L Type RJ With OMT Network

ITEM	SPECIFICATION
Frequency	Rx:10.95 ~ 12.75 GHz/Tx:13.75 ~ 14.5 GHz
VSWR	1.4 max
Insertion Loss	0.2 dB max
Isolation Rx/Tx	40 dB min @ 10.7 ~ 12.75 GHz 70 dB min @ 13.75 ~ 14.5 GHz

MMW & Microwave



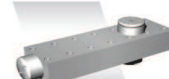
E-Band Diplexer T Type

ITEM	SPECIFICATION
Frequency	CH1:71-76 GHz / CH2:81-86 GHz
Insertion Loss	0.7 dB max (0.5 dB typical)
Return Loss	18 dB min
Tx/Rx Isolation	65 dB min



E-Band Diplexer M Type

ITEM	SPECIFICATION
Frequency	CH1:71-76 GHz / CH2:81-86 GHz
Insertion Loss	0.7 dB max (0.5 dB typical)
Return Loss	18 dB min
Tx/Rx Isolation	65 dB min



Hybrid Coupler for ODU

ITEM	SPECIFICATION
Frequency range	5.825 ~ 42.0 GHz
Bandwidth	25% max
Insertion Loss, Main (dB)	1.8 ~ 3.8
Insertion Loss, Secondary (dB)	3.8 ~ 3.8
Insertion Loss, Main (dB)	1.8 ~ 1.8
Insertion Loss, Secondary (dB)	1.7 ~ 2.3
VSWR @ Coupler Port	1.2 ~ 1.3
Port Port Isolation (dB)	20

Antennas

Slot Array Antenna



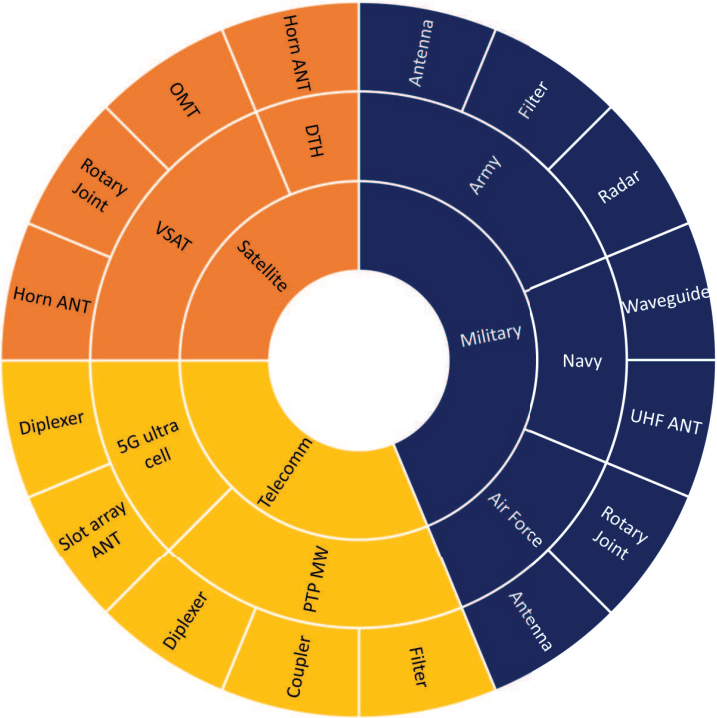
Passive Components



Rotary Joint



Product Categories



Satellite

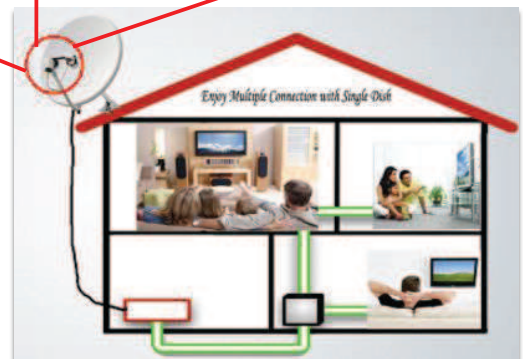


- Product:

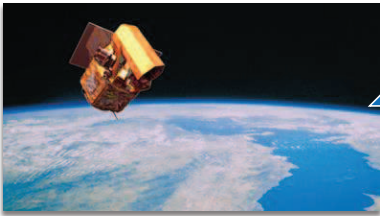
- Universal LNB
- Rocket LNB
- Monoblock
- dCSS LNB
- Antenna

- Achievement:

- The World's first launch SAT>IP LNB for Flat Antenna
- Operators' certified partner in Europe, ME, SE Asia and LATAM countries



Satellite



Application: FORMOSAT Space Satellite No. 1 to No. 7

Product: S-Band Helix and X-Band Antenna ,Diplexer

Achievement: The only space qualified and local certified partner supplying satellite antennas to NSPO Taiwan and export to Dubai, Singapore and Korea

Application: 3.7M S-Band TT&C Satellite Ground Station

Product: TT&C Satellite Ground Station System, include ACU, Pedestal, and S-Band feed horn system

Achievement: The first 100% Taiwan-made Satellite Ground Station System

Defense



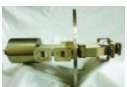
X-Band Acquisition and Tracking Radar



WR90 Dual Channel Rotary Joint



WR90 Four Channel Rotary Joint



WR90 Three Channel Rotary Joint



X-Band ESA Radar Truck



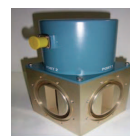
4 Channel Rotary Joint with
48 Ways Slip Ring Portfolio



S-Band ESA Radar Truck



WR284 4 Port High Power Circulator



WR284 Single Channel Rotary Joint



WR284 High Power Dummy Load



WR284 Power Switch



Defense



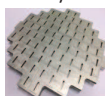
Anti-Tactical Ballistic Missile



Dual Axis Rotary Joint



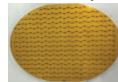
Slot Array Antenna



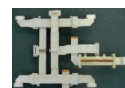
F-CK-1 Fighter Jet



X-Band Slot Array Antenna



X-Band Mono-Pulse Comparator



X-Band High Power Circulator



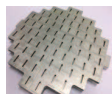
Anti-Ship Missile



WR51 U-Type Rotary Joint



Slot Array Antenna



Medium Range Air-to-Air Missile



X-Band Miniature Antenna



X-Band High Temperature Antenna



X-Band Patch Antenna



Communication



SATCOM



Ku-Band Pass Filter with Isolator - Waveguide



Ku-Band Receive Rejection Filter

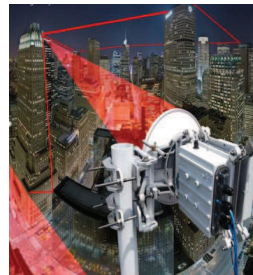


Ku-Band Rotary Joint with OMT Network



- Application:
 - VSAT System
 - Satellite Uplink
 - Waveguide
- Products:
 1. Feed Horn
 2. OMT
 3. Filter
 4. Load
 5. Bend/Twist

Point to point radio ODU from 13GHz to 90GHz



E-Band Diplexer



Feed Antenna



Hybrid coupler

23GHz Diplexer on Radio



90GHz Isolator

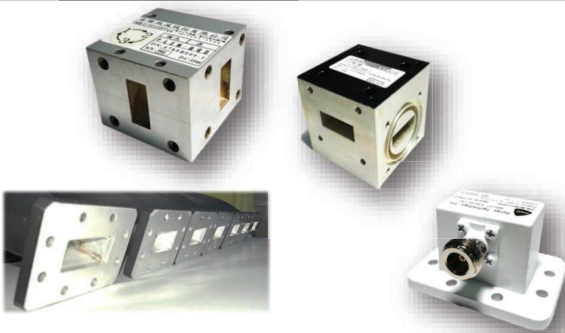


OMT



- Application:
 - Point-to-Point Radio ODU from 13GHz to 90GHz
- Products:
 1. Feed Antenna
 2. Up to 90GHz Diplexer
 3. Hybrid Coupler

Communication



- Application:
 - Monitoring
 - Signal Routing
 - Device Mismatch Protection
- Products:
 - Cross Guide Coupler
 - Circulator
 - N-Type Adapter

- Application:
 - Earth Station Antenna
 - Satellite Uplink
 - SOTM
 - ATC / Weather Radar
- Products:
 - Multi Channel Rotary Joint
 - Waveguide Bend and Twist
 - WR28 to WR284 EIA

